

EuropeanLeadershipUniversity



European
Leadership
University



North Cyprus

www.elu.edu.tr



NORTH CYPRUS

North Cyprus provides a most hospitable welcome, with its friendly people, and its beautiful natural attractions, unspoilt, unpolluted and uncrowded with miles of coastline and golden sands bathed in sunshine almost every day of the year.

Cyprus is the most eastern of the Mediterranean islands and the third largest in the area after Sicily and Sardinia. It lies in the clear blue waters of the Eastern Mediterranean. At the nearest coastal points it is 40 miles from Turkey, 60 miles from Syria, and 250 miles from Egypt. North Cyprus is approximately 100 miles long, 40 miles across at its widest point and has a total area of 1357 square miles, comprising nearly 36% of the island of Cyprus.



European
Leadership
University

WHY STUDY IN NORTH CYPRUS?

- 1.** One of the safest places in the world.
- 2.** Universities in North Cyprus are known for quality Education at International standards in English.
- 3.** North Cyprus Universities are Internationally recognized and accepted worldwide.
- 4.** International Students have the opportunity to enjoy qualified faculty members at international standards.
- 5.** Courses are taught in English.
- 6.** Affordable tuition fees and moderate living expenses. The tuition fees are reasonable and cheaper than in most parts of Europe.
- 7.** Accommodation is of world-class standard and available close to classes and around the city.



ACCREDITATIONS & PARTNERSHIPS

EUROPEAN LEADERSHIP UNIVERSITY
IS FULLY ACCREDITED FOR ITS
INNOVATIVE TECH DEGREES



ACCREDITATION SERVICE
for
INTERNATIONAL SCHOOLS,
COLLEGES & UNIVERSITIES





CHOOSE YOUR PROGRAM

Institutes

1. Institute of Social Science
2. Institute of Graduate Studies of Science and Engineering

Faculties

1. Business Faculty
2. Communication Faculty
3. Applied Sciences Faculty
4. Engineering Faculty
5. Law Faculty

Programs

A. Associate Programs

1. Justice Vocation School

- | | |
|--|---|
| 1.1 Justice Program | 8 |
| 1.2 Assistant of Lawyer and Certifying Officer | 9 |

2. Aviation Vocational School

- | | |
|--|----|
| 2.1 Unmanned Aerial Vehicle and Operator Program | 10 |
|--|----|

3. Business Vocational School

- | | |
|-----------------------------|----|
| 3.1 Business Administration | 11 |
|-----------------------------|----|

B. Bachelor Programs

1. Business Faculty

- | | |
|-----------------------------|----|
| 1.1 Business Administration | 12 |
| 1.2 Science in Leadership | 13 |

2. Communication Faculty

- | | |
|--|----|
| 2.1 Communication and Social Media | 14 |
| 2.2 Digital Marketing and Social Media | 15 |

3. Applied Science Faculty

- | | |
|---|----|
| 3.1 Tourism Management | 16 |
| 3.2 Technology Entrepreneurship and MIS | 17 |





4. Engineering Faculty

- 4.1 Data Science
- 4.2 Software Engineering
- 4.3 Artificial Intelligence
- 4.4 Cyber Security
- 4.5 Computer Engineering
- 4.6 Management Engineering

18

19

20

21

22

23

5. Law Faculty

- 5.1 Bachelor of Law

24

C. Master Programs

1. Institute of Graduate Studies of Science and Engineering

- 1.1 Artificial Intelligence
- 1.2 Renewable Energy Sources
- 1.3 Cyber Security
- 1.4 Data Science

25

26

27

28

2. Institute of Social Science

- 2.1 Business Administration
- 2.2 Private Law
- 2.3 International Aviation Law
- 2.4 International Maritime Law
- 2.5 Technology MBA
- 2.6 Information Technology Law

29

30

31

32

33

34

D. Ph.D. Programs

1. Institute of Social Science

- 1.1 Business Administration
- 1.2 Private Law
- 1.3 Artificial Intelligence

35

36

37

ASSOCIATE DEGREE



European
Leadership
University



JUSTICE

2 YEARS | ENGLISH TAUGHT | ON CAMPUS

The associate degree is an introductory program designed to prepare students to work in fields related to law and justice, including juvenile justice, criminal law, legal evidence, law enforcement and more.

The program specifically, helps prepare professionals who will serve as chief court reporters, court stenographers, court clerks and directors or officers of the debt enforcement offices, prisons and law enforcement units. To reach

these goals, students in the program take courses on law, in addition to learning more about relevant computer software and office management techniques.

Graduates of this program end up with promising careers in both the public and private sectors. For those who choose to return to their studies, this program offers a clear pathway into future studies in the law faculties at the university through a transfer exam.

Admission Requirements

- 1- International Passport
- 2- High School Diploma and Transcript
- 3- English Proficiency Result such as: IELTS (Academic) overall 5.5 or Duolingo English Test 95-100
(If the student does not provide any English Proficiency Result, an English Placement Test will be taken by ELU once the student arrives in Cyprus)



ASSOCIATE
DEGREE

ASSISTANT OF LAWYER AND CERTIFYING OFFICER

2YEARS | ON CAMPUS

This program trains students to become legal assistants and certifying officers of the law, who can manage the fast-paced environments and detail-oriented tasks required by lawyers and legal offices. This two-year program offers courses on legal procedures in various areas of the law, including: civil litigation, estates, wills, trusts, and criminal jus-

tice. In addition, students will be trained in research, clerking, and writing skills- so that they can directly assist lawyers and other legal professionals on preparing their cases, filing, and managing the schedules of their teams. Graduates of this program are well-positioned to work in various public and private legal settings.

Admission Requirements

- 1- International Passport
- 2- High School Diploma and Transcript
- 3- English Proficiency Result such as: IELTS (Academic) overall 5.5 or Duolingo English Test 95-100
(If the student does not provide any English Proficiency Result, an English Placement Test will be taken by ELU once the student arrives in Cyprus)





UNMANNED AERIAL VEHICLE AND OPERATOR PROGRAM

2 YEARS | ENGLISH TAUGHT | ON CAMPUS

The Associate Degree in Unmanned Aerial Vehicle (UAV) provides students with the knowledge required to become an innovator in unmanned aerial robotic systems and tackle the latest challenges for UAVs or drones, ranging from urban utility operations to remote scientific investigation. Foundational skills such as flight dynamics, control, and avionics are complemented with disruptive technologies such as autonomous navigation and bio-inspiration.

This program exposes students to a wide range of advanced engineering and computer science concepts while offering the opportunity to apply these to a UAV project.

The course covers the main systems, involved equipment, and stations of control for unmanned aircrafts, as well as how they affect human safety. They also will know the principles of geomatics, photogrammetry and cartography, navigation, aerotriangulation, interpretation and digital treatment of images, as well as of the best practices in the operation of unmanned aerial systems and know to apply the current regulations in force. Moreover, students will develop the capacity to take part and interact with other technical teams in the planning of unmanned aerial systems; as well as develop a technical project in the field of engineering and of the operations of unmanned aerial systems.

Admission Requirements

1-International Passport

2-High School Diploma and Transcript

3-English Proficiency Result such as: IELTS (Academic) overall 5.5 or Duolingo English Test 95-100

(If the student does not provide any English Proficiency Result, an English Placement Test will be taken by ELU once the student arrives in Cyprus)



ASSOCIATE
DEGREE

BUSINESS ADMINISTRATION

2 YEARS | ENGLISH TAUGHT | ON CAMPUS

With an associate degree in Business Administration, students will learn the core principles needed to navigate the fast-paced, cutting-edge world of business. This program lays the foundation for a future career in the private sector and sets students up to pursue a bachelor's degree in the field and eventually a Master's in Business Administration (MBA).

Courses covered in the program include accounting, marketing, management and communication. Students also de-

velop an in-depth understanding of management principles, business-oriented technology, and interpersonal skills.

For those looking to enter the workforce quickly, an associate degree offers an ideal path into entry-level business administration roles across different sectors. For those who seek to pursue a bachelor's degree, students can easily transfer some of their credits from the associate program, making the bachelor's degree more affordable.

Admission Requirements

1-International Passport

2-High School Diploma and Transcript

3-English Proficiency Result such as: IELTS (Academic) overall 5.5 or Duolingo English Test 95-100

(If the student does not provide any English Proficiency Result, an English Placement Test will be taken by ELU once the student arrives in Cyprus)





BUSINESS ADMINISTRATION

4 YEARS | ENGLISH TAUGHT | ON CAMPUS

The purpose of the Bachelor of Business Administration is to equip students with the necessary knowledge and skills that will ensure immediate employment and prepare them for postgraduate studies. Emphasis is on obtaining administrative, communication skills, and practice of business decision-making process.

Administrative skills are transmitted to the student in such a way as to enable it to critical analysis in areas such as business plans, understanding the administrative structures and promoting innovation.

Through a comprehensive curriculum, a BBA degree is designed to help you prepare for real-world business administration roles and how to

reach smart business conclusions through empirical analysis, such as planning how an organization operates day-to-day to adjusting strategies in the face of ongoing changes and challenges.

Graduates holding BBA degrees are well trained to embark on multiple career paths. These programs are designed to prepare scholars for employment positions in the private and public sectors. Employers may hire them as sales managers, department heads, operation managers, human resource managers, cost estimators and various other positions in private and public sectors or graduates may opt to use their skills to become entrepreneurs.

Admission Requirements

1-International Passport

2-High School Diploma and Transcript

3-English Proficiency Result such as: IELTS (Academic) overall 6.00 or Duolingo English Test 105-115

(If the student does not provide any English Proficiency Result, an English Placement Test will be taken by ELU once the student arrives in Cyprus)





SCIENCE IN LEADERSHIP

4 YEARS | ENGLISH TAUGHT | ON CAMPUS

The Bachelor of Science in Leadership Studies gives graduates the practical knowledge and experience to lead positive change in the workplace as well as in their communities. The program was designed to give students the expertise to understand, analyze and model skills needed in a broad range of

organizations, such as business management, government, and non-profit. In addition, students can customize the degree to their personal career choice.

Students are required to add a minor that will direct their studies for enhanced career opportunities.

Admission Requirements

- 1-International Passport
- 2-High School Diploma and Transcript
- 3-English Proficiency Result such as: IELTS (Academic) overall 6.00 or Duolingo English Test 105-115
(If the student does not provide any English Proficiency Result, an English Placement Test will be taken by ELU once the student arrives in Cyprus)





COMMUNICATION AND SOCIAL MEDIA

4 YEARS | ENGLISH TAUGHT | ON CAMPUS

The social media and communication bachelor's program offers students both the theoretical and technical training they will need to succeed in the expanding, ever-evolving field of digital communication. Courses in the program focus on the history and theory of social media communication, examining the intersections of technology, human communication, and society. At the same time, however, students also learn about

the range of social media platforms and tools that exist, as well as where the field is heading in the future. Finally, with an emphasis on practice, the program gives students ample opportunities to develop their own social media campaigns, as well as more technical skills such as building websites, audio and video editing, and photography for online distribution, which they will need for their future careers in the field.

Admission Requirements

1-International Passport

2-High School Diploma and Transcript

3-English Proficiency Result such as: IELTS (Academic) overall 6.00 or Duolingo English Test 105-115

(If the student does not provide any English Proficiency Result, an English Placement Test will be taken by ELU once the student arrives in Cyprus)



DIGITAL MARKETING & SOCIAL MEDIA

4 YEARS | ENGLISH TAUGHT | ON CAMPUS | ONLINE

The BSc in Digital Marketing and Social Media is an innovative program that aims to fill the gap identified in modern firms in the field of marketing. Specifically, the advancement of technologies in communication as well as development and ubiquity of digital media generate new challenges as well as opportunities that need to be addressed by contemporary marketers.

This unique program aims to provide the necessary knowledge and practical experience to meet the contemporary needs. The program has a strong foundation in business and marketing but its delivery is also heavily influenced with the input from other fields

namely, information technology so as to understand and appreciate the current information ecosystem, including the WWW and smart mobile devices, and media communication so as to understand and appreciate how digital content and information can be constructed and used.

Professionals who can leverage the power of digital marketing via mobile devices, social networks, graphic design and the Web are in high demand in the marketplace. Our Bachelor of Science in Digital Marketing and Social Media degree is designed to develop each student's creative, technical and business talents to empower their careers as digital marketers.

Admission Requirements

- 1-International Passport
- 2-High School Diploma and Transcript
- 3-English Proficiency Result such as: IELTS (Academic) overall 6.00 or Duolingo English Test 105-115
(If the student does not provide any English Proficiency Result, an English Placement Test will be taken by ELU once the student arrives in Cyprus)





TOURISM MANAGEMENT

4 YEARS | ENGLISH TAUGHT | ON CAMPUS

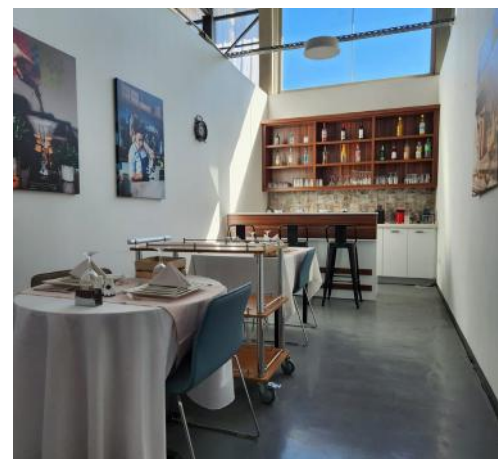
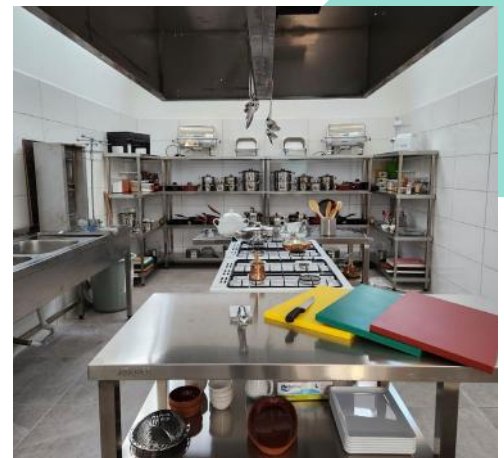
The Tourism Management program trains you to become a professional manager in the tourism and recreation industry.

During the program you will work on problems from practice, linked to basic courses such as marketing, e-business, financial management, and consumer behavior. In the study program, theory and practice are carefully integrated. You will work in project groups together with fellow students. In addition, the courses, skills training programs, guest lectures, company visits, study trips and work placements will help you develop the competencies you need

as a qualified professional.

The fundamental aim of the ELU' s Department of Tourism Management is to train qualified and skilled tourism labor force who can contribute to the development of the tourism sectors of the Turkish Republic of Northern Cyprus, Turkey and other countries.

The graduates of this department have a wide spectrum of job opportunities in the tourism sector. Transportation companies, airlines (e. g., air steward/ ess, ground services), marine companies (e. g., cruise ships), international hotel chains, tourism operators and travel agencies are only a few of them.



Admission Requirements

1-International Passport

2-High School Diploma and Transcript

3-English Proficiency Result such as: IELTS (Academic) overall 6.00 or Duolingo English Test 105-115

(If the student does not provide any English Proficiency Result, an English Placement Test will be taken by ELU once the student arrives in Cyprus)





TECHNOLOGY ENTREPRENEURSHIP AND MIS

4 YEARS | ENGLISH TAUGHT | ON CAMPUS

One of the fastest growing industries globally today is Management Information Systems (MIS). Both the private and public sectors are seeking professionals trained in the field, who can bring together computer engineering skills, technical expertise in information technologies, and an understanding of business management. This program is designed to train students for the demands of this high-growth sector.

The Bachelor's Program in Management Information Systems is divided into two parts. The first focuses on information technology, while the second develops

students' competencies in business and management. As part of the technical information technology portion, students take courses in computer architecture, programming, database management, and computer security. Meanwhile, the business and management courses focus on skills such as accounting, finance, marketing, and strategic planning. Trained in these dual, interdisciplinary tracks, our graduates leave the program prepared to work in a wide range of industries ranging from private corporations, government offices, non-profit organizations, and universities.

Admission Requirements

1-International Passport

2-High School Diploma and Transcript

3-English Proficiency Result such as: IELTS (Academic) overall 6.00 or Duolingo English Test 105-115
(If the student does not provide any English Proficiency Result, an English Placement Test will be taken by ELU once the student arrives in Cyprus)





DATA SCIENCE

4 YEARS | ENGLISH TAUGHT | ON CAMPUS

The importance of data in problem-solving, decision-making, and strategy has become ever more apparent in the last decade. We live in a world of big data. Many of our everyday actions, from watching videos on our phones to purchasing a product online create data. Since the advent of the technological revolution, data has played an increasingly important role in many fields and spheres of life. For this reason, interpreting and understanding data has become a highly-valued skill. Data science is the study and examination

of data with the purpose of understanding patterns. It uses tools, techniques, and theories to produce a meaningful interpretation of data for decision-making and development.

It is an interdisciplinary field of study that uses scientific methods, programming skills and knowledge of mathematics and statistics to extract insight from data. Degrees in this field allow a diverse range of specializations and prepare students for many different occupations.

Admission Requirements

1-International Passport

2-High School Diploma and Transcript

3-English Proficiency Result such as: IELTS (Academic) overall 6.00 or Duolingo English Test 105-115

(If the student does not provide any English Proficiency Result, an English Placement Test will be taken by ELU once the student arrives in Cyprus)





SOFTWARE ENGINEERING

4 YEARS | ENGLISH TAUGHT | ON CAMPUS

The Bachelor's study program in Software Engineering establishes knowledge in three major areas related to computer science:

Software engineering (with courses covering data security and protection, IT service management and requirements engineering)

Programming and technology skills (with courses covering cloud programming, app and web-based development, data modelling and database systems)

Methodological work skills (with courses covering IT project management and methods of agile software development).

Once students have developed their foundations in all three areas, they will get a chance to explore more nuanced topics according to their interest, from a wide range of electives focusing on artificial intelligence, the Internet of Things and Robotics and Production Engineering.

Admission Requirements

1-International Passport

2-High School Diploma and Transcript

3-English Proficiency Result such as: IELTS (Academic) overall 6.00 or Duolingo English Test 105-115
(If the student does not provide any English Proficiency Result, an English Placement Test will be taken by ELU once the student arrives in Cyprus)





ARTIFICIAL INTELLIGENCE

4 YEARS | ENGLISH TAUGHT | ON CAMPUS

The main aim of the Artificial Intelligence (AI) Engineering Program is to introduce students to the most up-to-date developments in the area of Artificial Intelligence Engineering and, at the same time, to enhance their life-long learning skills. Our AI-focused program will give you a solid grounding in Artificial Intelligence and Computer Science and equip you with the knowledge and skills you'll need to be part of the AI future.

Learn advanced programming skills and develop your own software using industry standard techniques and tools. Learn about essential areas such as databases and networks, operating systems, and the cloud.

Gain specialist knowledge and experience in the development of intelligent systems, including machine learning, algorithms and complexity and visual computing.

Admission Requirements

1-International Passport

2-High School Diploma and Transcript

3-English Proficiency Result such as: IELTS (Academic) overall 6.00 or Duolingo English Test 105-115

(If the student does not provide any English Proficiency Result, an English Placement Test will be taken by ELU once the student arrives in Cyprus)





CYBER SECURITY

4 YEARS | ENGLISH TAUGHT | ON CAMPUS

The Cyber security Program provides students with the knowledge and skills of computer security, bringing together theory, tools, and best practices. It also prepares students for careers in many areas of cyber security including cyber analytics, penetration testing, network security, digital forensics, and cyber security operations and management careers.

Through this program, students specifically learn to identify and apply theories and processes related to information security, assurance, and cyber security.

They also develop the skills to apply security and cyber defense principles to the planning, implementing, and monitoring of cyber security mechanisms to help ensure the protection of information technology assets.

The program also covers questions around ethical decision-making and professional integrity, as well as, prepare students to better identify and analyze organizational problems relating to information assurance, security, and its implications for value creation and defense.

Admission Requirements

- 1-International Passport
- 2-High School Diploma and Transcript
- 3-English Proficiency Result such as: IELTS (Academic) overall 6.00 or Duolingo English Test 105-115
(If the student does not provide any English Proficiency Result, an English Placement Test will be taken by ELU once the student arrives in Cyprus)





COMPUTER ENGINEERING

4 YEARS | ENGLISH TAUGHT | ON CAMPUS

The main aim of the program is to introduce students with the most up-to-date developments in the area of the computer engineering and, at the same time, to further develop their life-long learning skills. The Program aims to train qualified and well-educated computer engineers who possess in-depth knowledge in computer systems, hardware and software, and who are able

to put their theoretical knowledge into practice by producing new designs. The department's graduates are perfectly equipped to deal with rapidly changing environments based on their solid education and strong background in the underlying principles of the technology, as well as hands on experience they get through laboratory work.

Admission Requirements

1-International Passport

2-High School Diploma and Transcript

3-English Proficiency Result such as: IELTS (Academic) overall 6.00 or Duolingo English Test 105-115

(If the student does not provide any English Proficiency Result, an English Placement Test will be taken by ELU once the student arrives in Cyprus)



MANAGEMENT ENGINEERING

4 YEARS | ENGLISH TAUGHT | ON CAMPUS

The Management Engineering program provides an interdisciplinary foundation to its graduates to integrate complex technical understanding with high-level management Skills, with particular attention to business administration principles and applications, while being able to use the complex technical knowledge with a holistic view and capability of integrating relevant information in making decisions. With their complex knowledge of management and engineering, graduates of this program are prepared to design and provide solutions for manufacturing and service organizations, take leadership roles in their place of work, or pursuing research work at graduate level.

General Information

The first two years of the undergraduate curriculum in Management Engineering are dedicated to foundation courses in mathematics and basic sciences (freshman calculus, physics, and chemistry), as well as English, Introduction to Management Engineering, and Intro-

duction to Business courses. Courses offered during the remaining two years of the program focus on engineering modeling, management and business fields focusing on analytical thinking, observation and design skills.

Education

The Management Engineering Program focuses on technical subjects as well as providing in-depth information on management principles. Program graduates are equipped with complex management and engineering solutions on product development, production and service presentation. The program has been designed to assure quality and foster the highest quality of education to graduate management engineers with abilities to analyze and interpret data, design and conduct experiments, apply knowledge to solve engineering problems in a global economic, environment and societal context that considers the political, ethical, health, and safety effects of such work, in addition to manufacturability and sustainability.

Admission Requirements

- 1-International Passport
- 2-High School Diploma and Transcript
- 3-English Proficiency Result such as: IELTS (Academic) overall 6.00 or Duolingo English Test 105-115
(If the student does not provide any English Proficiency Result, an English Placement Test will be taken by ELU once the student arrives in Cyprus)





LAW

4 YEARS | ON CAMPUS

The Legal Faculty offers a four-year bachelor's program that focuses on the Turkish legal system. The curricula closely parallel the law programs in Turkey.

This program prepares students to understand and apply the law in a holistic way that connects theory and practice. As such, students learn how the legal system operates and the intricacies of national and international law. At the same time, they must understand the underlying ethics, values, principles that shape the legal system. Furthermore, because law is increasingly being practiced across national boundaries, students must take intensive English courses as part of the curricula. They will also take more theoretical

courses intended to develop their critical analytical skills and communication skills, which will be necessary for their future work in the legal field. Students who graduate from the Faculty of Law can enter a wide number of professional career pathways.

Most immediately, they can work in administrative offices, serve as legal clerks, and notaries. They can train to become lawyers, judges, and prosecutors, as well as work in political and administrative positions within the offices of governors, inspectors, and other bureaucratic positions. Finally, many of our graduates go on to work in the private sector in areas dealing with legal compliance and international trade.

Admission Requirements

1-International Passport

2-High School Diploma and Transcript

3-English Proficiency Result such as: IELTS (Academic) overall 6.00 or Duolingo English Test 105-115

(If the student does not provide any English Proficiency Result, an English Placement Test will be taken by ELU once the student arrives in Cyprus)





ARTIFICIAL INTELLIGENCE

2 YEARS | ENGLISH TAUGHT | ON CAMPUS

The Master's in Artificial Intelligence program prepares students to become leaders in the global field of artificial intelligence (AI). Students learn a broad range of relevant topics, such as AI algorithms, data structures, big data analysis, and AI in gaming and robotics, while developing additional skills in image recognition and natural lan-

guage processing. In addition to their coursework, students in the program have unique opportunities to conduct research in the Department's laboratories and research centers. Graduates of the program find exciting career opportunities both in the public and private sectors, while others continue their doctoral studies in the field of AI.

Admission Requirements

- 1-International Passport
- 2-University Bachelor Degree Diploma and Transcript
- 3- English Proficiency Result such as: IELTS (Academic) overall 6.00 or Duolingo English Test 105-115
(If the student does not provide any English Proficiency Result, an English Placement Test will be taken by ELU once the student arrives in Cyprus)





RENEWABLE ENERGY SOURCES

2 YEARS | ENGLISH TAUGHT | ON CAMPUS

This program offers students detailed knowledge of all major renewable energy sources and the engineering skills associated with them, including geothermal, solar, biomass, hydro, marine and wind. In addition, there are courses covering legislative, planning and economic considerations associated with renewable energy, and the integration of renewable energy to the grid. The course covers both theoretical knowledge and advanced technical skills required to meet the demands of this ever-evolving sector. Teaching is done by expert faculty drawn from

our engineering school as well as from the energy industry, to ensure that students are exposed to the latest developments and future needs of the renewable energy industry.

One of the main features of the program is its interdisciplinary nature, being suitable for students with mechanical, civil, electrical, chemical and other suitable engineering backgrounds. In special cases, the program is also open to students with other relevant science backgrounds, including Physics, Chemistry and Applied Maths.

Admission Requirements

1-International Passport

2-University Bachelor Degree Diploma and Transcript

3- English Proficiency Result such as: IELTS (Academic) overall 6.00 or Duolingo English Test 105-115

(If the student does not provide any English Proficiency Result, an English Placement Test will be taken by ELU once the student arrives in Cyprus)





CYBER SECURITY

2 YEARS | ENGLISH TAUGHT | ON CAMPUS

The Cyber security Graduate Program provides a professional, technical and policy view of the challenges created by rapid advancements in information technology.

Students in this program will examine principles of computer systems security,

including attack protection and prevention.

By combining computer science and application, this program's interdisciplinary approach will give graduate students the vital skills needed for today's cyber workforce.

Admission Requirements

- 1-International Passport
- 2-University Bachelor Degree Diploma and Transcript
- 3- English Proficiency Result such as: IELTS (Academic) overall 6.00 or Duolingo English Test 105-115
(If the student does not provide any English Proficiency Result, an English Placement Test will be taken by ELU once the student arrives in Cyprus)





DATA SCIENCE

2 YEARS | ENGLISH TAUGHT | ON CAMPUS

The Data Science Master's program offers students the advanced technical skills and broader understanding of how Data Science operates in the 21st century. Moreover, students develop necessary research skills so they can design and implement their own research projects to advance the field as a whole. Finally, the program places a high emphasis on preparing students to meet the real-world demands of the private sector by focusing on the skills (both technical and soft) needed to excel in field of data science.

The program offers courses in both basic and advanced statistical methods, machine learning, data visualization, data mining, and business analytics.

Students will learn computer programming, database management, and writing and other communication skills.

With a Masters in Data Science, our graduates find careers in one of the fast-growing industries in the world today.

Admission Requirements

1-International Passport

2-University Bachelor Degree Diploma and Transcript

3- English Proficiency Result such as: IELTS (Academic) overall 6.00 or Duolingo English Test 105-115

(If the student does not provide any English Proficiency Result, an English Placement Test will be taken by ELU once the student arrives in Cyprus)





BUSINESS ADMINISTRATION (MBA)

2 YEARS | ENGLISH TAUGHT | ON CAMPUS

Today's conditions require executives from different disciplines such as Business, Engineering and Law to put the theoretical knowledge that they have gained by following the scientific developments into practice in solving the problems they encounter in their work lives.

The purpose of this program is to educate executives who are dynamic, who own analytical thinking, who know how to improve themselves for developing and changing market conditions.

Current theory and practice based course program of the MBA program (with thesis in English) has been de-

signed to educate professional executives who can communicate effectively and who own personal skills, who are keen on social responsibilities and aim at continuous development.

Participants of the program take core Business courses in the first two semesters. In the third semester of the program students choose the field they want to be specialized in and take the courses of that specific field. There are two different fields of expertise as entrepreneurship and innovation, and marketing. During the fourth semester the students have to complete a Master's thesis.

Admission Requirements

- 1-International Passport
- 2-University Bachelor Degree Diploma and Transcript
- 3- English Proficiency Result such as: IELTS (Academic) overall 6.00 or Duolingo English Test 105-115
(If the student does not provide any English Proficiency Result, an English Placement Test will be taken by ELU once the student arrives in Cyprus)





PRIVATE LAW

2 YEARS | ENGLISH TAUGHT | ON CAMPUS

This program trains graduates to develop the knowledge, skills, and background in legal science to be able to use information and communication technologies to follow innovations and developments in the field of law.

This program provides effective, reliable legal training that adheres to national and international qualifications to work as legal professionals.

Law Faculty graduates have a wide spectrum of

career choices. Students successfully graduating from the Faculty of Law may pursue career opportunities as lawyers, judges, prosecutors and notaries. Additionally, they may undertake administrative duties as governors, district governors, inspectors and specialists. Law as a field of profession offers a wide spectrum of employment opportunities and a prestigious future for graduates.

Admission Requirements

1-International Passport

2-University Bachelor Degree Diploma and Transcript

3- English Proficiency Result such as: IELTS (Academic) overall 6.00 or Duolingo English Test 105-115

(If the student does not provide any English Proficiency Result, an English Placement Test will be taken by ELU once the student arrives in Cyprus)



A wooden desk with a gavel, handcuffs, and a model airplane.

INTERNATIONAL AVIATION LAW

2 YEARS | ENGLISH TAUGHT | ON CAMPUS

This graduate program examines the legal regime governing carriage by air of passengers, baggage, and cargo. It also provides students with opportunities to study a range of select topics related to aviation law.

Topics covered in the program include the role of the International Civil Aviation Organization and the establish-

ment of a regulatory framework; the resolution of inter-governmental aviation disputes; air carriers' liability for passengers, baggage, and cargo, which includes instances of air rage and DVT litigation; aviation security; air carrier liability for surface damage; and finally, intercarrier agreements such as Montreal Intercarrier Convention

Admission Requirements

- 1-International Passport
- 2-University Bachelor Degree Diploma and Transcript
- 3- English Proficiency Result such as: IELTS (Academic) overall 6.00 or Duolingo English Test 105-115 (If the student does not provide any English Proficiency Result, an English Placement Test will be taken by ELU once the student arrives in Cyprus)





INTERNATIONAL MARITIME LAW

2 YEARS | ENGLISH TAUGHT | ON CAMPUS

This legal program trains graduates on the most pressing issues confronting the international transport sector as it relates to maritime law.

Topics span the regulatory side of these issues, such as environmental and safety issues, as well as those from the commercial perspective, such as uniform contract and insurance matters. The course focuses on domestic or international law,

or a combination of both. In terms of practical skills, the program prepares students for the various types of contracts used in maritime transportation; the use of documents such as charter parties; the relationship between carriage and the sale of goods carried; and more. The course also delves into special laws of transport that deal dealing with the means and ways of maritime transport

Admission Requirements

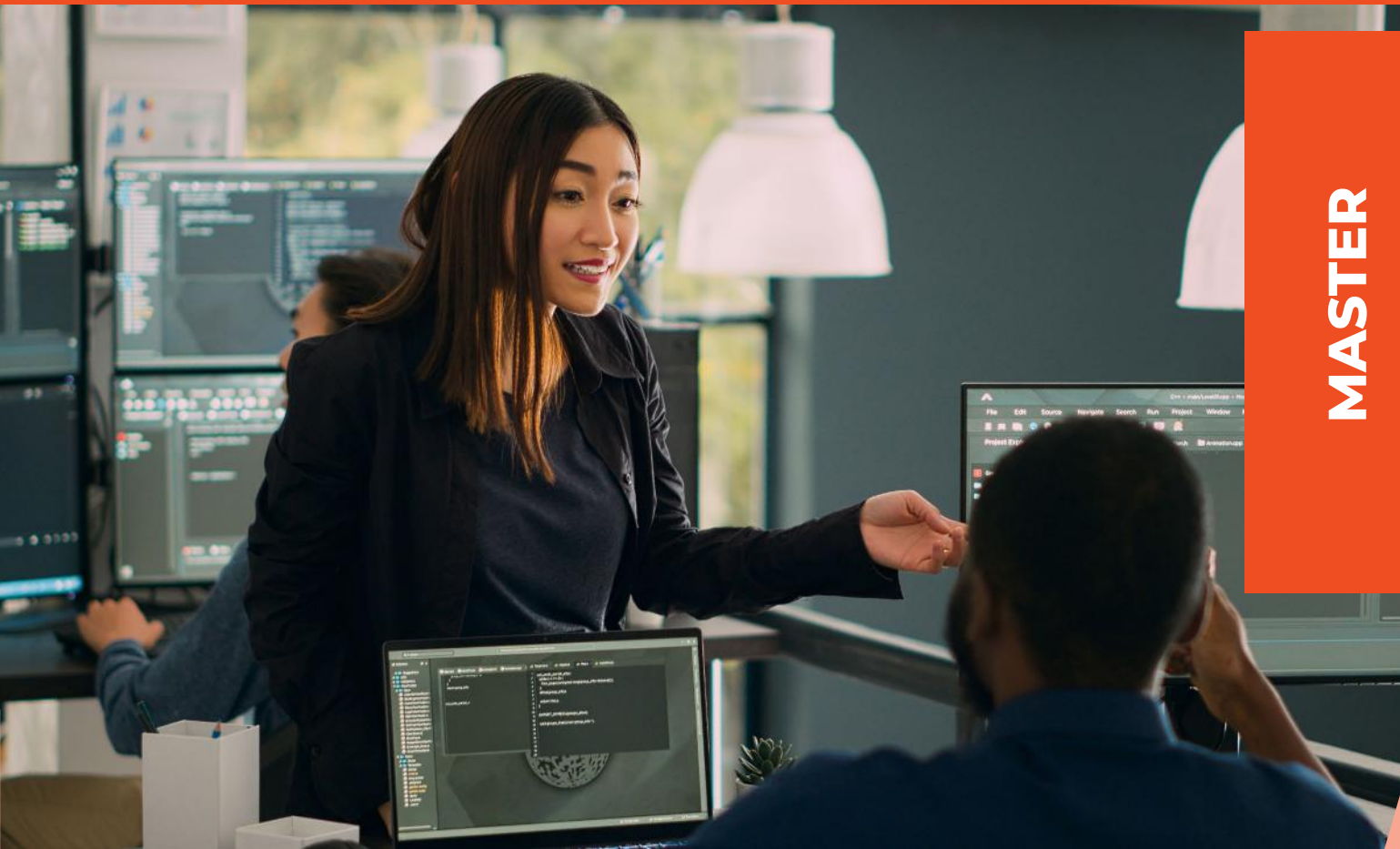
1-International Passport

2-University Bachelor Degree Diploma and Transcript

3- English Proficiency Result such as: IELTS (Academic) overall 6.00 or Duolingo English Test 105-115

(If the student does not provide any English Proficiency Result, an English Placement Test will be taken by ELU once the student arrives in Cyprus)





TECHNOLOGY MBA

2 YEARS | ENGLISH TAUGHT | ON CAMPUS

The Technology Masters in Business Administration (MBA) program will deepen your foundation in business, while expanding your knowledge of technology. The program is structured around four major areas of study: Business Core, Technology Core, Stern Solution, and Elective core.

Through this program, student will build broad knowledge in fundamental areas of business with courses like Leadership, Marketing, Accounting, and Strategy. They will also take courses that specifically delve into the tech industry, with classes such as Technical Product

Management, Emerging Technologies, Business Analytics, and DevOps and Software Engineering. In Stern Solutions, the program aims at tapping into the heart of the global business ecosystem and solving a range of real-world problems at the intersection of business and technology. Such an approach helps students build a portfolio of skill sets, relationships and experiences that serve as the foundation for successful careers. Finally, the Elective core allows students to explore specific functional area or take courses in their own area of interest.

Admission Requirements

- 1-International Passport
- 2-University Bachelor Degree Diploma and Transcript
- 3- English Proficiency Result such as: IELTS (Academic) overall 6.00 or Duolingo English Test 105-115
(If the student does not provide any English Proficiency Result, an English Placement Test will be taken by ELU once the student arrives in Cyprus)





INFORMATION TECHNOLOGY LAW

2 YEARS | ENGLISH TAUGHT | ON CAMPUS

The Information Technology Law program explores the wealth of legal issues associated with the regulation of cyberspace and the use of Information and Communication Technology (ICT) systems, particularly in light of the increasing convergence of technologies and offerings. The program prepares students for an array of technical and analytical skills that consider the impact and limits of markets, community norms, technological restrictions and law, in regulation

of the Internet and virtual communities. Students learn to also assess the needs of commerce and consumers, citizens and states in respect of private and public transactions on the internet, and the role that can and should be played by the law. Finally, the program trains students to better evaluate the adequacy of existing national, regional, international and alternative rules in areas like cybercrime, cloud computing, and on-line privacy.

Admission Requirements

1-International Passport

2-University Bachelor Degree Diploma and Transcript

3- English Proficiency Result such as: IELTS (Academic) overall 6.00 or Duolingo English Test 105-115

(If the student does not provide any English Proficiency Result, an English Placement Test will be taken by ELU once the student arrives in Cyprus)





DOCTORATE IN BUSINESS ADMINISTRATION

2-5 YEARS | ENGLISH TAUGHT | ON CAMPUS

The doctoral program is designed for highly motivated students wishing to acquire advanced research and intellectual (analytical) skills in the area of business administration. The program is designed to prepare the next generation of highly effective scholars pursuing careers in the academia or consulting in the private or public sectors. Students in this program are given a solid theoretical background and opportunity to conduct innovative, highly-focused research in business administration, for the purpose of creating new knowledge.

Description

The Business Administration doctoral program admits students interested in pursuing research in areas related to marketing, human resources and organizational behavior, and entrepreneurship. The first two years of the program

involves coursework, culminating in a comprehensive exam after which another two to three years are spent on research and completion of a doctoral thesis. All doctoral students are expected to contribute to scientific literature in their field through at least one publication in a journal covered by the SSCI (Social Sciences Citation Index). The PhD program consists of 7 courses, a qualification exam after the completion of the courses, a seminar and a thesis. The medium of instruction in the PhD program is English.

GENERAL OBJECTIVES:

The program is course and research-based and focuses on qualitative and quantitative skills and global perspectives – enabling students to engage in research projects at the beginning of the doctoral program.

Admission Requirements

- 1-International Passport
- 2-University Bachelor Degree Diploma and Transcript as well as Master Degree Diploma and Transcript
- 3- English Proficiency Result such as: IELTS (Academic) overall 6.00 or Duolingo English Test 105-115
(If the student does not provide any English Proficiency Result, an English Placement Test will be taken by ELU once the student arrives in Cyprus)





DOCTORATE IN PRIVATE LAW

2-5 YEARS | ENGLISH TAUGHT | ON NICOSIA & FAMAGUSTA CAMPUS

The doctoral program in the Faculty of Law trains advanced graduates in the field of legal science. This program is intended for legal professionals who believe in the rule of law, who can express the values they defend within the framework of the principles of legal training, and are strong in their communication skills, while maintaining their ethical values and sense of community service.

The faculty is directed towards the delivery of effective, reliable legal training that carries national and international qualifications for the purposes

of training globally qualified legal professionals. Law Faculty graduates have a wide spectrum of career choices. Students successfully graduating from the Faculty of Law may pursue career opportunities as lawyers, judges, prosecutors and notaries.

Additionally, they may undertake administrative duties as governors, district governors, inspectors and specialists. Law

as a field of study offers a wide spectrum of employment opportunities and a prestigious future for the graduates.

Admission Requirements

1-International Passport

2-University Bachelor Degree Diploma and Transcript as well as Master Degree Diploma and Transcript

3- English Proficiency Result such as: IELTS (Academic) overall 6.00 or Duolingo English Test 105-115

(If the student does not provide any English Proficiency Result, an English Placement Test will be taken by ELU once the student arrives in Cyprus)





DOCTORATE IN ARTIFICIAL INTELLIGENCE

2-5 YEARS | ENGLISH TAUGHT | ON CAMPUS

The PhD in Artificial Intelligence brings together studies of computational science, psychology, and human-technology interactions. As one of the most rapidly growing fields, AI is quickly transforming the ways people, governments, and institutions use technology for varying purposes. This program is designed to prepare students to meet the demands of this rapidly growing field. Students will not only learn about the latest developments in AI technologies but are expected to produce their own innovative research, which will advance the field theoretically and practically for both the private and public

sectors.

Given the strong emphasis on research, students in this doctoral program must develop their computational skills alongside their research competencies and methods, such as statistical analyses. At the same time, however, because of the innovation required to advance AI technologies, the program also centers creativity and problem-solving. As such, students are encouraged to take a wide range of courses, which help them think “out-of-the-box” about human-technology interactions and the future uses and ethical implications around the use of artificial intelligence.

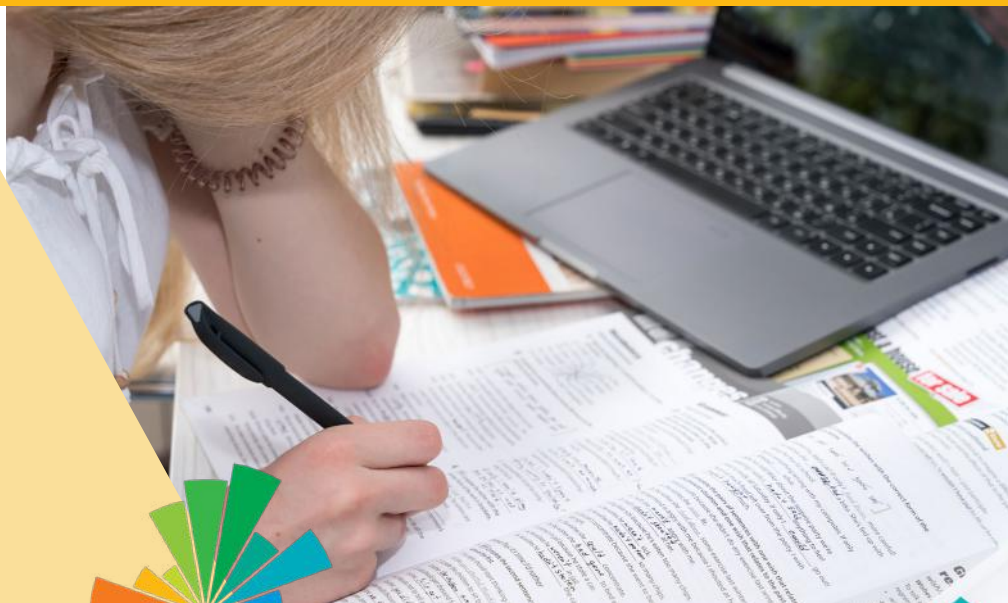
Admission Requirements

1-International Passport

2-University Bachelor Degree Diploma and Transcript as well as Master Degree Diploma and Transcript

3- English Proficiency Result such as: IELTS (Academic) overall 6.00 or Duolingo English Test 105-115

(If the student does not provide any English Proficiency Result, an English Placement Test will be taken by ELU once the student arrives in Cyprus)



ENGLISH LANGUAGE SCHOOL

Language school plays a crucial role in preparing our students for their careers in English language speaking. With our efficient, streamlined English Language programs, students can meet their needs and achieve their educational goals.

EPS offers intensive education into two semesters (one academic year) long. Students who hold a valid document showing their acceptable language level can start their courses in the chosen department. For those who have no documents regarding their language level are required to take English Placement test administered in the EPS to take their appropriate level. English Placement Test is administered at the beginning of each semester. Students are assigned to classes appropriate for their grade attained in Placement Test. Stu-

dents who do not take English Placement Test are accepted as A1 level and take education at this level.

Our students are placed in the courses as A1, A2 and B1 at the beginning of the Semester, from low to high, according to their English knowledge and skill levels. Each course is designed to cater for the needs of the learners at an appropriate level in order to progress towards a higher level. The course timetable for each level is scheduled as a total of 24 hours per week. The whole semester equals approximately 200 hours to accomplish the outcomes of CEFR level description. The education offered in EPS is divided into two parts in an academic year. Students are able to complete the EPS and go to the department at the end of the semester or year, depending on their level of success.

English Preparatory Levels

The Common European Framework divides language learning, teaching, and assessment into six levels under three main sections. These sections and levels are as follows:

A Basic Speaker

A1 Breakthrough
A2 Wastage

B Independent Speaker

B1 Threshold
B2 Vantage

C Proficient Speaker

C1 Effective Operational Proficiency
C2 Mastery



ENGLISH PROFICIENCY TEST

DUOLINGO ENGLISH PROFICIENCY TEST FIRST IN NORTH CYPRUS

We are proud to announce our new partnership with Duolingo English Duilingo English Proficiency Test.

Due to the closure of academic testing centers during the Coronavirus Pandemic, the Duolingo English Proficiency test is now accepted by European Leadership University to give admissions into our university departments.

The Duolingo English Proficiency test is well recognized worldwide, it is an alternative to TOEFL and IELTS and is accepted by over 2000 educational institutions worldwide.

European Leadership University is the first institution to accept and admin-

ister the Duolingo English Proficiency test in North Cyprus.

The exam costs \$49 (USD) and will be done on a computer. The exam portion of the Duolingo English test contains a series of speaking, reading, writing and listening exercises.

Following the exam, there will be an interview portion that will ask you to respond to various prompts in 30 to 90 seconds. The exam will take about 45 minutes to complete and you will need either a passport, a driver's license, or a national or state ID to show the camera. The score results are generally received within a few days of exam completion.



duolingo english test



Dear Applicant

We appreciate your interest in studying at European Leadership University (ELU). In order to apply for admission, you need to send your documents to studentaffairs1@elu.edu.tr or apply through online admission portal at <https://elu.edu.tr/apply-now/> link.

Once we receive your application, the admissions committee will evaluate and review the documents; if you meet the minimum requirements, ELU will send you a Conditional Letter.

If you accept the offer of admission and want to register and make payment, you can pay the tuition fees cash in the main office or through bank account details written on the Conditional Letter or send the money through Western Union.

After receiving the initial payment by student affairs, the admissions committee will issue the Letter of Acceptance along with a payment receipt and send it to your email address; then, you will be allowed to travel to North Cyprus. Furthermore, the tuition fees and agent commission details are as below:

ELU Associate Degree Programs Tuition Fees and Scholarships:

Scholarships (%)	0%	25%	50%
Tuition Fee (Yearly)	3,000 Euros	2,250 Euros	1,500 Euros
Initial Payment	1,000 Euros	1,000 Euros	1,000 Euros

*For all international students, 50% of scholarships have been considered.

Initial payment: 1,000 Euros (First-semester registration).

Second-semester tuition fee is 500 Euros.

**All admitted undergraduate students must pay 1,000 Euros as the first tuition installment to receive the Letter of Acceptance.

ELU Undergraduate Programs Tuition Fees and Scholarships:

Scholarships (%)	0%	25%	50%
Tuition Fee (Yearly)	4,400 Euros	3,300 Euros	2,200 Euros
Initial Payment	1,200 Euros	1,200 Euros	1,200 Euros

*For all international students, 50% of scholarships have been considered. Initial payment: 1,200 Euros (First-semester registration).

For other semesters tuition fee is 1,000 Euros per semester.

**All admitted undergraduate students must pay 1,200 Euros as the first tuition installment to receive the Letter of Acceptance.

ELU Graduate Programs Tuition Fees and Scholarships:

Master Program:

	Non-Scholarship	50% Scholarships	75% Scholarships
Fee Per Course	380 Euros	190 Euros	95 Euros
Fee for Thesis	540 Euro	270 Euros	135 Euros
Fee for Seminar (First Time Free)	Free	Free	Free
Registration and Activity Fees	220 Euros	150 Euros	75 Euros
English Preparatory Course (Per Semester)	1,380 Euros	690 Euros	345 Euros
Fee for Leave of Absence (Max. 2 Semesters)	800 Euros	400 Euros	200 Euros

75% Scholarships Plan (4 Semesters):

Total Courses 10 x 95 Euros = 950 Euros

Master's Thesis (Minimum 2 Semesters Must be Taken) (One semester free) = 135 Euros
 Fee for Seminar (First Time Free) = Free

Registration and Activity Fees 4 x 150 Euros = 300 Euros

Total Tuition Fee for 4 Semesters = 1,385 Euros

50% Scholarships Plan (4 Semesters):

Total Courses 10 x 190 Euros = 1,900 Euros

Master's Thesis (Minimum 2 Semesters Must be Taken) (One semester free) = 270 Euros
 Fee for Seminar (First Time Free) = Free

Registration and Activity Fees 4 x 150 Euros = 600 Euros

Total Tuition Fee for 4 Semesters = 2,770 Euros

Non- Scholarship Plan (4 Semesters):

Total Courses 10 x 380 Euros = 3,800 Euros

Master's Thesis (Minimum 2 Semesters Must be Taken) (One semester free) = 540 Euros
 Fee for Seminar (First Time Free) = Free

Registration and Activity Fees 4 x 220 Euros = 880 Euros

Total Tuition Fee for 4 Semesters = 5,220 Euros



*For all international students, 50% of scholarships have been considered. Initial payment: 1,200 Euros (First-semester registration).

**All admitted graduate students must pay 1,200 Euros as the first tuition installment to receive the Letter of Acceptance.



Ph.D. Program:	Non-Scholarship	25% Scholarships	50% Scholarships	75% Scholarships
Fee Per Course	1,200 Euros	900 Euros	600 Euros	300 Euros
Fee for Thesis	1,200 Euros	900 Euros	600 Euros	300 Euros
Fee for Qualifying Examination	800 Euros	600 Euros	400 Euros	200 Euros
Fee for Seminar	400 Euros	300 Euros	200 Euros	100 Euros
Registration and Activity Fees	500 Euros	350 Euros	220 Euros	150 Euros
English Preparatory Course (PerSemester)	2,760 Euros	2,070 Euros	1,380 Euros	690 Euros
Fee for Leave of Absence (Max. 2Semesters)	2,000 Euros	1,500 Euros	1,000 Euros	500 Euros

*** Deficiency Courses Fee will be Calculate Based on Master's Program Fees.**

75% Scholarships Plan (6 Semesters):

Total Courses 7 x 300 Euros = 2,100 Euros

Ph.D. Thesis (Minimum 4 Semesters Must be Taken) (Two semesters free) 2 x 300 = 600 Euros
Fee for Qualifying Examination = 200 Euros

Fee for Seminar = 100 Euros

Registration and Activity Fees 6 x 150 Euros = 900 Euros

Total Tuition Fee for 6 Semesters = 3,900 Euros

50% Scholarships Plan (6 Semesters):

Total Courses 7 x 600 Euros = 4,200 Euros

Ph.D. Thesis (Minimum 4 Semesters Must be Taken) (Two semesters free) 2 x 600 = 1,200 Euros
Fee for Qualifying Examination = 400 Euros

Fee for Seminar = 200 Euros

Registration and Activity Fees 6 x 220 Euros = 1,320 Euros

Total Tuition Fee for 6 Semesters = 7,320 Euros

25% Scholarships Plan (6 Semesters):

Total Courses 7 x 900 Euros = 6,300 Euros

Ph.D. Thesis (Minimum 4 Semesters Must be Taken) (Two semesters free) 2 x 900 = 1,800 Euros

Fee for Qualifying Examination = 600 Euros

Fee for Seminar = 300 Euros

Registration and Activity Fees 6 x 350 Euros = 2,100 Euros

Total Tuition Fee for 6 Semesters = 11,100 Euros

Non- Scholarship Plan (6 Semesters):

Total Courses 7 x 1,200 Euros = 8,400 Euros

Ph.D. Thesis (Minimum 4 Semesters Must be Taken) (Two semesters free) 2 x 1,200 = 2,400 Euros

Fee for Qualifying Examination = 800 Euros

Fee for Seminar = 400 Euros

Registration and Activity Fees 6 x 500 Euros = 3,000 Euros

Total Tuition Fee for 6 Semesters = 15,000 Euros



*For all international students, 50% or 75% of scholarships have been considered according to the admission committee's decision.

Initial payment: 1,200 Euros (First-semester registration).

**All admitted graduate students must pay 1,200 Euros as the first tuition installment to receive the Letter of Acceptance



PHYSICAL INFRASTRUCTURE AND FACILITIES

- Rectorate office, academic and administrative offices
- 12 classrooms, equipped with Tv sets, online camera, and free access to internet
- 3 study rooms for the students to do the research and group work, with an area of 15 m², 25 m², and 26 m².
- The library, 100 m², includes 25 seats, 3 smart TVs 55 with E-Libraries access with 4,942,358

- books and 77,050, 028 articles which creates a comfortable space for the students to study.
- Open Auditorium, multi-purpose foyer area, equipped with computers and two large screens for the presentations
- Cafeteria with two Automatic Vending Machines
- Student Lounge, with six sofas, 5 stand lights
- Internal garden with an area of 80 m²





EUROPEAN LEADERSHIP UNIVERSITY CENTRE FOR ENTREPRENEURSHIP AND BUSINESS INNOVATION (CEBI)

The Centre for Entrepreneurship and Business Innovation exists to foster a more prosperous economy by providing resources and guidance to student entrepreneurs and small businesses on the road to success. CEBI positively impacts the economy by strengthening existing companies, creating new jobs, retaining existing jobs, and assisting companies in defining their path to success.

Our mission is to educate, train and connect students and entrepreneurs seeking to establish and grow high value, high-growth companies. We integrate knowledge in business and corresponding technologies with business acumen to build world-class companies.

We do this by creating programs which foster the development of an entrepreneurial mindset and the abilities to identify problems and opportunities, understand the problem/opportunity through potential customers craft and narrow plausible solutions to said problem/opportunity. Approach: Think, Solve & Build

Our Activities include but not limited to:

- Mentorship and Coaching for Startups
- Courses for Startups and business
- Fellowship programs
- Webinars
- Workshops
- and more.

Website: cebi.elu.edu.tr



CENTRE FOR ENTREPRENEURSHIP & BUSINESS INNOVATION



CENTER OF UNIVERSITY INDUSTRY SYNERGIES (CUIS)

ELU' s Center of University-Industry Synergies (CUIS) program was launched in 2019 to improve the quality of mutually university-industry collaborations by developing and disseminating strategies for addressing common issues between the two sectors. In an increasingly complex and multi- disciplinary research ecosystem, universities and industries can benefit from partnering. A common goal of the long-term development plan of industrial partners is efficiency gain and competitiveness enhancement.

University-industry collaboration requires careful management and can bring many benefits. These include a two-way flow of ideas: results can flow out to industry and they can also be in- bound to fuel research questions.

Our Mission

The mission of the Center of University – Industry Synergies (CUIS) is to find and enhance synergies between university and corporate partners for mutual benefit, as well as for the economic and cultural enrichment of the North

Cyprus industrial region.

The CUIS supports mutually beneficial university-industry collaborations by developing and disseminating strategies for addressing common issues between the two sectors. CUIS supports the creation and growth of a broad spectrum of relationships between industry partners and the university' s internal stakeholders including collaborations for research, technology commercialization, entrepreneurship, and student internship and career placement services.

The tasks of the CUIS departments are:

- Harmonization of research results and industrial needs,
- Provision of an efficient R&D environment,
- Incorporating university research results into industrial projects, Flexible response to industry challenges,
- Training and administering of interdisciplinary engineers, Researching and teaching solid theoretical bases,
- Quick reaction to changes and changes of industries

ELU TOURISM CLUB

European Leadership University's Tourism Club exists for 2 reasons:

To provide a social vehicle for students interested in the Tourism industry.

· To provide a networking contact between students and professional in the Tourism industry.

The Tourism Club was established as a forum for students interested in Tourism to network and socialize with other students and professionals. Each year the club organizes "Tourism Career Day" which brings a varied panel of industry professionals to campus to share their perspectives and insights into the Tourism industry.

Other activities of the Tourism club include: City Tours, Competitions, Movie nights, Nature walks, seminars and webinars, publishing of monthly e-Magazine and lots more.

Upcoming Events:

World Tourism Day: 27 th September 2023

Competitions:

Dance Competition

Logo Design for ELU Tourism Club / Essay / Play writing for Green Tourism in North Cyprus

Join the Tourism Club from ELU Tourism Department





ELU LIONS

SPORT CLUB



Exercise is a great way to manage stress, keep healthy, get some downtime and even socialize. ELU offers a wide range of sports programs and state-of-the-art facilities for exercise and sports, satisfying all levels of interest, commitment and fitness. We aim to provide all our students the opportunity to participate in competitive sports, while also promoting the development of leadership and team skills and the fostering of sportsmanship. ELU is an active member of the "Cyprus University Sports Federation" (KKÜSF) in Basketball, Table Tennis, and Marathon, with men's and women's teams. We participate in competitive university sports organized by the Federation.

COMPETITIVE SPORTS

We maintain a competitive sports programme, enabling students to participate in the Cyprus University Sports Federation Championships in women's and men's football, basketball, volleyball, handball, swimming, futsal, table tennis, cross country running, beach volleyball, badminton, dart, track and field, and tennis. Trials and selection of the best student athletes are carried out at the beginning of each semester

for each team. Selected players are automatically entitled to an athletic scholarship.

RECREATIONAL SPORTS

We also offer a range of fun and recreational sports activities throughout the academic year, which provide a great way to meet people with similar interests. These include table tennis, beach soccer, beach volleyball, and Foosball.

SPORTS CLUBS

Our Sports Clubs are also very popular with our students. They include aerobics and fitness, running, basketball, futsal, martial arts, hatha yoga, outdoor activities, running and many others.

KKTC PRO-LEAGUE

This Pro-league consists of top-tier level professional basketball clubs. The best teams from the KKTC professional league are eligible to join the annual competition. There is also an opportunity for interested students to have training with our professional basketball players and have this chance to play in either Pro-league or Unileague in future.



ELU SUMMER SCHOOL PROGRAM

The ELU International Summer School brings together students from several nationalities both home and abroad. The summer school not only provides an opportunity for students to learn new practical skills, it is also an opportunity for students to get ahead with their degree; students can choose from either the courses they are yet to take in coming semesters thereby shortening their number of courses which can help them graduate earlier, or they can make up for previous courses. Another opportunity the summer school gives students is its affordability, students can pay per course unlike the semester fees.



GASTRONOMY

The Gastronomy workshop is about the way different cultures cook and eat their food. It reflects the culture, heritage, traditions and sense of community of different peoples. It is a way of promoting understanding among different cultures, and of bringing people and traditions closer together. It helps the students in Tourism Management be familiar with various cuisines and traditions all over the world. Overall, a gastronomy workshop can provide tourism students with practical skills, cultural awareness, business knowledge, networking opportunities, and creativity and innovation experiences that can help them succeed in their future careers.



BAR & BARTENDER

The purpose of this workshop is to provide a service in the food and beverage industry and involves learning about the industry, having skills and knowledge, and doing assessment activities to ensure that the people who hold it are qualified to do the job they do.

The benefit of this training for Tourism students is to train them to keep an eye on current industry trends and encourage them to recommend their establishment to other potential industries in the future.



FRONT OFFICE

This qualification is designed to help people pursue a career as a Front Office Manager in the Hospitality industry. It helps to determine what knowledge, skills, and abilities are needed to do this job well and provides guidance on the type of training that may be necessary, such as greeting and welcoming guests, receiving and delivering all incoming and outgoing mail and packages, answering all calls, directing as needed, scheduling meetings, and coordinating office activities.

Training Tourism Management Students in multiple functions creates a positive work environment and skilled team members. This helps to balance the workflow and develop team spirit. Additionally, cross-training the front desk team allows for greater flexibility when needed.



LAUNDRY



The overall objective of a laundry workshop is to empower Tourism students with the knowledge and skills needed to care for clothes effectively and efficiently, while also promoting sustainability and eco-friendly practices in laundry care. Furthermore, it teaches participants how to properly wash and care for clothes, including sorting, washing, drying, and ironing techniques, and introduces different types of laundry products and tools, such as detergents, fabric softeners, stain removers, and washing machines. Overall, a laundry workshop can provide tourism students with practical skills, professional development, sustainability knowledge, and team-building opportunities to help them succeed in their future careers.

ROOM SERVICE

This workshop is responsible for greeting guests and answering questions, changing bed linen and making beds, replacing used towels and other bathroom amenities, sweeping and mopping floors, vacuuming carpets, dusting and polishing furniture, and emptying trash containers and ashtrays. Room service is a great way to make sure that the guests are happy and that food is served correctly. Acknowledging Tourism management students with room service and guest satisfaction will improve their management skills.





European
Leadership
University

GET IN TOUCH

MAĞUSA KAMPÜS:

Mustafa Kemal Caddesi, No:7, P.K:99500,
Gazimağusa, Kuzey Kıbrıs

FAMAGUSTA CAMPUS:

Mustafa Kemal Avenue, No:7, P.C:99500,
Famagusta, North Cyprus

LEFKOŞA KAMPUS:

Mustafa Ruso Caddesi, No:79,
P.K:922005, Lefkoşa, Kuzey Kıbrıs

NICOSIA CAMPUS:

Mustafa Ruso Avenue, No:79,
P.C:922005, Nicosia, North Cyprus

Tel: +90 (392)444 66 77

Tel: +90 (392) 227 66 77 | 227 66 73

E-mail: studentaffairs1@elu.edu.tr

E-mail 2: info@elu.edu.tr

www.elu.edu.tr



elucyprus



EuropeanLeadershipUniversity