



**European
Leadership
University**

WHY STUDY IN NORTH CYPRUS?

- 1.** One of the safest places in the world.
- 2.** Universities in North Cyprus are known for quality Education at International standards in English.
- 3.** North Cyprus Universities are Internationally recognized and accepted worldwide.
- 4.** International Students have the opportunity to enjoy qualified faculty members at international standards.
- 5.** Courses are taught in English.
- 6.** Affordable tuition fees and moderate living expenses. The tuition fees are reasonable and cheaper than in most parts of Europe.
- 7.** Accommodation is of world-class standard and available close to classes and around the city.



WE ARE A NEW GENERATION UNIVERSITY FOR GLOBAL TECH TALENT

European Leadership University is a New Generation University built for the digital economy. We aim to bridge the skills gap in the tech field through a unique educational model that helps you to get the most wanted, job-ready skills. We offer professional degree programmes to equip our learners with skills required for current jobs and are highly demanded by employers in today's digital economy.

Our university provides high-quality education at accessible prices for students from diverse backgrounds. Our model is a blend of online and classroom instruction, which aims to practice it with partners in global corporations and local employers to build much needed key skills. ELU partners provide on-the-job experience and build relationships that will ensure not only productive and long-term employment for students but also economic value for corporations and markets.

Our approach and methodology is rooted in a core activity which is to combine the digital world with the educational world. By organising and facilitating these programmes, we offer an intensive learning experience: multidisciplinary teams help our students with mentoring and in-depth collaboration with the business community. When you study with ELU you can be sure that our programmes are in line with the latest developments in the digital world - developing optimum capability to devise innovative solutions.

Bülent Çetinkaya

Chairman of Board of Trustees of European Leadership University, Cyprus

ACCREDITATIONS & PARTNERSHIPS

EUROPEAN LEADERSHIP UNIVERSITY IS FULLY ACCREDITED FOR ITS INNOVATIVE TECH DEGREES

The European Leadership University is fully accredited.

The university addresses two key problems facing education today: high levels of youth unemployment on the one hand, but a shortage of people with critical job skills on the other. ELU has an innovative business model - an education to-employment approach across all its courses ensures its focus is on direct employability, not just academic excellence. It targets talented youth who may not otherwise attend college, making it an affordable approach for

students who want an accredited education but are unable to follow more traditional routes.

ELU helps guide students to their first professional work experiences, and gives them the critical skills needs for their future careers. European Leadership University is fully recognised by the Ministry of Education in the "Turkish Republic of Northern Cyprus and is accredited by YÖDAK - Higher Education Planning, Evaluation, Accreditation and Coordination Council of Nicosia.



ACCREDITATION SERVICE
for
INTERNATIONAL SCHOOLS,
COLLEGES & UNIVERSITIES





**European
Leadership
University**

CHOOSE YOUR PROGRAM

Institute

1. Institute of Social Science

Faculties

1. Business Faculty
2. Communication Faculty
3. Applied Sciences Faculty
4. Engineering Faculty
5. Law Faculty

Vocational Schools

1. Business Vocational School

Programs

A. Associate Programs

1. Business Vocational School

- 1.1 Business Administration

6

B. Bachelor Programs

1. Business Faculty

- 1.1 Business Administration
- 1.2 Science in Leadership

7

8

2. Communication Faculty

- 2.1 Communication and Social Media
- 2.2 Digital Marketing and Social Media

9

10

3. Applied Science Faculty

- 3.1 Tourism Management
- 3.2 Technology Entrepreneurship and MIS

11

12





4. Engineering Faculty

4.1 Data Science

13

4.2 Computer Engineering

14

5. Law Faculty

5.1 Bachelor of Law

15

B. Master Programs

1. Instity of Social Science

1.1 Business Administration

16

1.2 Private Law

17

C. Ph.D. Programs

1. Instity of Social Science

1.1 Business Administration

18

D. Preparatory School

1.1 English Language

19

1.2 Turkish Language



BUSINESS ADMINISTRATION

2 YEARS | ENGLISH TAUGHT | ON CAMPUS

With an associate degree in Business Administration, students will learn the core principles needed to navigate the fast-paced, cutting-edge world of business. This program lays the foundation for a future career in the private sector and sets students up to pursue a bachelor's degree in the field and eventually a Master's in Business Administration (MBA).

Courses covered in the program include accounting, marketing, management and communication. Students also de-

velop an in-depth understanding of management principles, business-oriented technology, and interpersonal skills.

For those looking to enter the workforce quickly, an associate degree offers an ideal path into entry-level business administration roles across different sectors. For those who seek to pursue a bachelor's degree, students can easily transfer some of their credits from the associate program, making the bachelor's degree more affordable.

Admission Requirements

1-International Passport

2-High School Diploma and Transcript

3-English Proficiency Result such as: IELTS (Academic) overall 5.5 or Duolingo English Test 95-100

(If the student does not provide any English Proficiency Result, an English Placement Test will be taken by ELU once the student arrives in Cyprus)





BUSINESS ADMINISTRATION

4 YEARS | ENGLISH TAUGHT | ON CAMPUS

The purpose of the Bachelor of Business Administration is to equip students with the necessary knowledge and skills that will ensure immediate employment and prepare them for postgraduate studies. Emphasis is on obtaining administrative, communication skills, and practice of business decision-making process.

Administrative skills are transmitted to the student in such a way as to enable it to critical analysis in areas such as business plans, understanding the administrative structures and promoting innovation.

Through a comprehensive curriculum, a BBA degree is designed to help you prepare for real-world business administration roles and how to

reach smart business conclusions through empirical analysis, such as planning how an organization operates day-to-day to adjusting strategies in the face of ongoing changes and challenges.

Graduates holding BBA degrees are well trained to embark on multiple career paths. These programs are designed to prepare scholars for employment positions in the private and public sectors. Employers may hire them as sales managers, department heads, operation managers, human resource managers, cost estimators and various other positions in private and public sectors or graduates may opt to use their skills to become entrepreneurs.

Admission Requirements

1-International Passport

2-High School Diploma and Transcript

3-English Proficiency Result such as: IELTS (Academic) overall 6.00 or Duolingo English Test 105-115

(If the student does not provide any English Proficiency Result, an English Placement Test will be taken by ELU once the student arrives in Cyprus)





SCIENCE IN LEADERSHIP

4 YEARS | ENGLISH TAUGHT | ON CAMPUS

The Bachelor of Science in Leadership Studies gives graduates the practical knowledge and experience to lead positive change in the workplace as well as in their communities. The program was designed to give students the expertise to understand, analyze and model skills needed in a broad range of

organizations, such as business management, government, and non-profit. In addition, students can customize the degree to their personal career choice.

Students are required to add a minor that will direct their studies for enhanced career opportunities.

Admission Requirements

- 1-International Passport
- 2-High School Diploma and Transcript
- 3-English Proficiency Result such as: IELTS (Academic) overall 6.00 or Duolingo English Test 105-115 (If the student does not provide any English Proficiency Result, an English Placement Test will be taken by ELU once the student arrives in Cyprus)





COMMUNICATION AND SOCIAL MEDIA

4 YEARS | ENGLISH TAUGHT | ON CAMPUS

The social media and communication bachelor's program offers students both the theoretical and technical training they will need to succeed in the expanding, ever-evolving field of digital communication. Courses in the program focus on the history and theory of social media communication, examining the intersections of technology, human communication, and society. At the same time, however, students also learn about

the range of social media platforms and tools that exist, as well as where the field is heading in the future. Finally, with an emphasis on practice, the program gives students ample opportunities to develop their own social media campaigns, as well as more technical skills such as building websites, audio and video editing, and photography for online distribution, which they will need for their future careers in the field.

Admission Requirements

1-International Passport

2-High School Diploma and Transcript

3-English Proficiency Result such as: IELTS (Academic) overall 6.00 or Duolingo English Test 105-115

(If the student does not provide any English Proficiency Result, an English Placement Test will be taken by ELU once the student arrives in Cyprus)





DIGITAL MARKETING & SOCIAL MEDIA

4 YEARS | ENGLISH TAUGHT | ON CAMPUS | ONLINE

The BSc in Digital Marketing and Social Media is an innovative program that aims to fill the gap identified in modern firms in the field of marketing. Specifically, the advancement of technologies in communication as well as development and ubiquity of digital media generate new challenges as well as opportunities that need to be addressed by contemporary marketers.

This unique program aims to provide the necessary knowledge and practical experience to meet the contemporary needs. The program has a strong foundation in business and marketing but its delivery is also heavily influenced with the input from other fields

namely, information technology so as to understand and appreciate the current information ecosystem, including the WWW and smart mobile devices, and media communication so as to understand and appreciate how digital content and information can be constructed and used.

Professionals who can leverage the power of digital marketing via mobile devices, social networks, graphic design and the Web are in high demand in the marketplace. Our Bachelor of Science in Digital Marketing and Social Media degree is designed to develop each student's creative, technical and business talents to empower their careers as digital marketers.

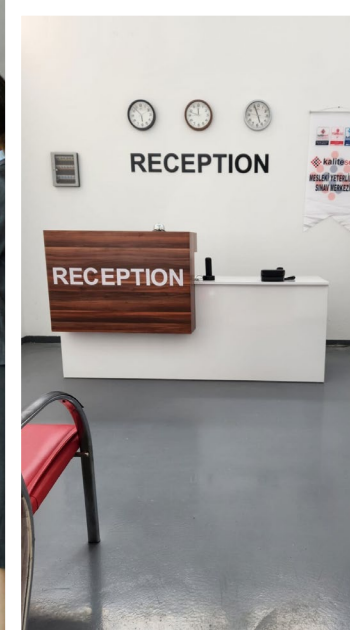
Admission Requirements

1-International Passport

2-High School Diploma and Transcript

3-English Proficiency Result such as: IELTS (Academic) overall 6.00 or Duolingo English Test 105-115 (If the student does not provide any English Proficiency Result, an English Placement Test will be taken by ELU once the student arrives in Cyprus)





TOURISM MANAGEMENT

4 YEARS | ENGLISH TAUGHT | ON CAMPUS

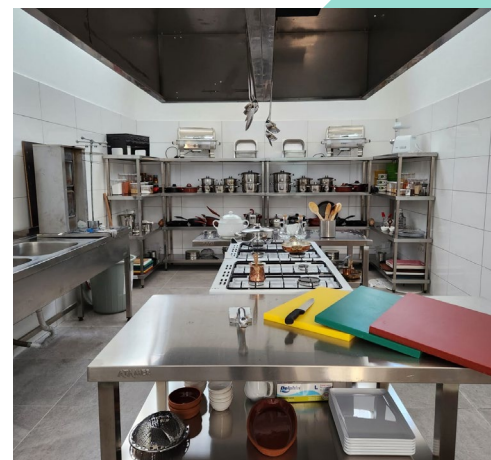
The Tourism Management program trains you to become a professional manager in the tourism and recreation industry.

During the program you will work on problems from practice, linked to basic courses such as marketing, e-business, financial management, and consumer behavior. In the study program, theory and practice are carefully integrated. You will work in project groups together with fellow students. In addition, the courses, skills training programs, guest lectures, company visits, study trips and work placements will help you develop the competencies you need

as a qualified professional.

The fundamental aim of the ELU' s Department of Tourism Management is to train qualified and skilled tourism labor force who can contribute to the development of the tourism sectors of the Turkish Republic of Northern Cyprus, Turkey and other countries.

The graduates of this department have a wide spectrum of job opportunities in the tourism sector. Transportation companies, airlines (e. g., air steward/ ess, ground services), marine companies (e. g., cruise ships), international hotel chains, tourism operators and travel agencies are only a few of them.



Admission Requirements

1-International Passport

2-High School Diploma and Transcript

3-English Proficiency Result such as: IELTS (Academic) overall 6.00 or Duolingo English Test 105-115

(If the student does not provide any English Proficiency Result, an English Placement Test will be taken by ELU once the student arrives in Cyprus)





TECHNOLOGY ENTREPRENEURSHIP AND MIS

4 YEARS | ENGLISH TAUGHT | ON CAMPUS

One of the fastest growing industries globally today is Management Information Systems (MIS). Both the private and public sectors are seeking professionals trained in the field, who can bring together computer engineering skills, technical expertise in information technologies, and an understanding of business management. This program is designed to train students for the demands of this high-growth sector.

The Bachelor's Program in Management Information Systems is divided into two parts. The first focuses on information technology, while the second develops

students' competencies in business and management. As part of the technical information technology portion, students take courses in computer architecture, programming, database management, and computer security. Meanwhile, the business and management courses focus on skills such as accounting, finance, marketing, and strategic planning. Trained in these dual, interdisciplinary tracks, our graduates leave the program prepared to work in a wide range of industries ranging from private corporations, government offices, non-profit organizations, and universities.

Admission Requirements

1-International Passport

2-High School Diploma and Transcript

3-English Proficiency Result such as: IELTS (Academic) overall 6.00 or Duolingo English Test 105-115
(If the student does not provide any English Proficiency Result, an English Placement Test will be taken by ELU once the student arrives in Cyprus)





DATA SCIENCE

4 YEARS | ENGLISH TAUGHT | ON CAMPUS

The importance of data in problem-solving, decision-making, and strategy has become ever more apparent in the last decade. We live in a world of big data. Many of our everyday actions, from watching videos on our phones to purchasing a product online create data. Since the advent of the technological revolution, data has played an increasingly important role in many fields and spheres of life. For this reason, interpreting and understanding data has become a highly-valued skill. Data science is the study and examination

of data with the purpose of understanding patterns. It uses tools, techniques, and theories to produce a meaningful interpretation of data for decision-making and development.

It is an interdisciplinary field of study that uses scientific methods, programming skills and knowledge of mathematics and statistics to extract insight from data. Degrees in this field allow a diverse range of specializations and prepare students for many different occupations.

Admission Requirements

1-International Passport

2-High School Diploma and Transcript

3-English Proficiency Result such as: IELTS (Academic) overall 6.00 or Duolingo English Test 105-115

(If the student does not provide any English Proficiency Result, an English Placement Test will be taken by ELU once the student arrives in Cyprus)





COMPUTER ENGINEERING

4 YEARS | ENGLISH TAUGHT | ON CAMPUS

The main aim of the program is to introduce students with the most up-to-date developments in the area of the computer engineering and, at the same time, to further develop their life-long learning skills. The Program aims to train qualified and well-educated computer engineers who possess in-depth knowledge in computer systems, hardware and software, and who are able

to put their theoretical knowledge into practice by producing new designs. The department's graduates are perfectly equipped to deal with rapidly changing environments based on their solid education and strong background in the underlying principles of the technology, as well as hands on experience they get through laboratory work.

Admission Requirements

1-International Passport

2-High School Diploma and Transcript

3-English Proficiency Result such as: IELTS (Academic) overall 6.00 or Duolingo English Test 105-115

(If the student does not provide any English Proficiency Result, an English Placement Test will be taken by ELU once the student arrives in Cyprus)





LAW

4 YEARS | ON CAMPUS

The Legal Faculty offers a four-year bachelor's program that focuses on the Turkish legal system. The curricula closely parallel the law programs in Turkey.

This program prepares students to understand and apply the law in a holistic way that connects theory and practice. As such, students learn how the legal system operates and the intricacies of national and international law. At the same time, they must understand the underlying ethics, values, principles that shape the legal system. Furthermore, because law is increasingly being practiced across national boundaries, students must take intensive English courses as part of the curricula. They will also take more theoretical

courses intended to develop their critical analytical skills and communication skills, which will be necessary for their future work in the legal field. Students who graduate from the Faculty of Law can enter a wide number of professional career pathways.

Most immediately, they can work in administrative offices, serve as legal clerks, and notaries. They can train to become lawyers, judges, and prosecutors, as well as work in political and administrative positions within the offices of governors, inspectors, and other bureaucratic positions. Finally, many of our graduates go on to work in the private sector in areas dealing with legal compliance and international trade.

Admission Requirements

1-International Passport

2-High School Diploma and Transcript

3-English Proficiency Result such as: IELTS (Academic) overall 6.00 or Duolingo English Test 105-115

(If the student does not provide any English Proficiency Result, an English Placement Test will be taken by ELU once the student arrives in Cyprus)





BUSINESS ADMINISTRATION (MBA)

2 YEARS | ENGLISH TAUGHT | ON CAMPUS

Today's conditions require executives from different disciplines such as Business, Engineering and Law to put the theoretical knowledge that they have gained by following the scientific developments into practice in solving the problems they encounter in their work lives.

The purpose of this program is to educate executives who are dynamic, who own analytical thinking, who know how to improve themselves for developing and changing market conditions.

Current theory and practice based course program of the MBA program (with thesis in English) has been de-

signed to educate professional executives who can communicate effectively and who own personal skills, who are keen on social responsibilities and aim at continuous development.

Participants of the program take core Business courses in the first two semesters. In the third semester of the program students choose the field they want to be specialized in and take the courses of that specific field. There are two different fields of expertise as entrepreneurship and innovation, and marketing. During the fourth semester the students have to complete a Master's thesis.

Admission Requirements

1-International Passport

2-University Bachelor Degree Diploma and Transcript

3- English Proficiency Result such as: IELTS (Academic) overall 6.00 or Duolingo English Test 105-115 (If the student does not provide any English Proficiency Result, an English Placement Test will be taken by ELU once the student arrives in Cyprus)





PRIVATE LAW

2 YEARS | ENGLISH TAUGHT | ON CAMPUS

This program trains graduates to develop the knowledge, skills, and background in legal science to be able to use information and communication technologies to follow innovations and developments in the field of law.

This program provides effective, reliable legal training that adheres to national and international qualifications to work as legal professionals.

Law Faculty graduates have a wide spectrum of

career choices. Students successfully graduating from the Faculty of Law may pursue career opportunities as lawyers, judges, prosecutors and notaries. Additionally, they may undertake administrative duties as governors, district governors, inspectors and specialists. Law as a field of profession offers a wide spectrum of employment opportunities and a prestigious future for graduates.

Admission Requirements

1-International Passport

2-University Bachelor Degree Diploma and Transcript

3- English Proficiency Result such as: IELTS (Academic) overall 6.00 or Duolingo English Test 105-115

(If the student does not provide any English Proficiency Result, an English Placement Test will be taken by ELU once the student arrives in Cyprus)





DOCTORATE IN BUSINESS ADMINISTRATION

2-5 YEARS | ENGLISH TAUGHT | ON CAMPUS

The doctoral program is designed for highly motivated students wishing to acquire advanced research and intellectual (analytical) skills in the area of business administration. The program is designed to prepare the next generation of highly effective scholars pursuing careers in the academia or consulting in the private or public sectors. Students in this program are given a solid theoretical background and opportunity to conduct innovative, highly-focused research in business administration, for the purpose of creating new knowledge.

Description

The Business Administration doctoral program admits students interested in pursuing research in areas related to marketing, human resources and organizational behavior, and entrepreneurship. The first two years of the program

involves coursework, culminating in a comprehensive exam after which another two to three years are spent on research and completion of a doctoral thesis. All doctoral students are expected to contribute to scientific literature in their field through at least one publication in a journal covered by the SSCI (Social Sciences Citation Index). The PhD program consists of 7 courses, a qualification exam after the completion of the courses, a seminar and a thesis. The medium of instruction in the PhD program is English.

GENERAL OBJECTIVES:

The program is course and research-based and focuses on qualitative and quantitative skills and global perspectives – enabling students to engage in research projects at the beginning of the doctoral program.

Admission Requirements

- 1-International Passport
- 2-University Bachelor Degree Diploma and Transcript as well as Master Degree Diploma and Transcript
- 3- English Proficiency Result such as: IELTS (Academic) overall 6.00 or Duolingo English Test 105-115
(If the student does not provide any English Proficiency Result, an English Placement Test will be taken by ELU once the student arrives in Cyprus)





ENGLISH LANGUAGE SCHOOL

Language school plays a crucial role in preparing our students for their careers in English language speaking. With our efficient, streamlined English Language programs, students can meet their needs and achieve their educational goals.

EPS offers intensive education into two semesters (one academic year) long. Students who hold a valid document showing their acceptable language level can start their courses in the chosen department. For those who have no documents regarding their language level are required to take English Placement test administered in the EPS to take their appropriate level. English Placement Test is administered at the beginning of each semester. Students are assigned to classes appropriate for their grade attained in Placement Test. Stu-

dents who do not take English Placement Test are accepted as A1 level and take education at this level.

Our students are placed in the courses as A1, A2 and B1 at the beginning of the Semester, from low to high, according to their English knowledge and skill levels. Each course is designed to cater for the needs of the learners at an appropriate level in order to progress towards a higher level. The course timetable for each level is scheduled as a total of 24 hours per week. The whole semester equals approximately 200 hours to accomplish the outcomes of CEFR level description. The education offered in EPS is divided into two parts in an academic year. Students are able to complete the EPS and go to the department at the end of the semester or year, depending on their level of success.

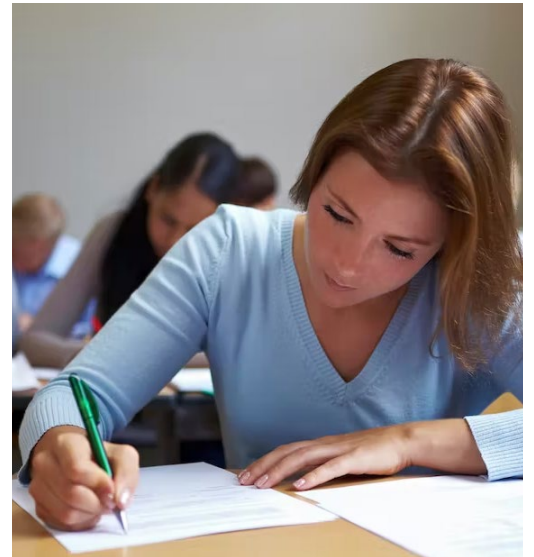
English Preparatory Levels

The Common European Framework divides language learning, teaching, and assessment into six levels under three main sections. These sections and levels are as follows:

A Basic Speaker
A1 Breakthrough
A2 Wastage

B Independent Speaker
B1 Threshold
B2 Vantage

C Proficient Speaker
C1 Effective Operational Proficiency
C2 Mastery



ENGLISH PROFICIENCY TEST

DUOLINGO ENGLISH PROFICIENCY TEST FIRST IN NORTH CYPRUS

We are proud to announce our new partnership with Duolingo English Duilingo English Proficiency Test.

Due to the closure of academic testing centers during the Coronavirus Pandemic, the Duolingo English Proficiency test is now accepted by European Leadership University to give admissions into our university departments.

The Duolingo English Proficiency test is well recognized worldwide, it is an alternative to TOEFL and IELTS and is accepted by over 2000 educational institutions worldwide.

European Leadership University is the first institution to accept and admin-

ister the Duolingo English Proficiency test in North Cyprus.

The exam costs \$49 (USD) and will be done on a computer. The exam portion of the Duolingo English test contains a series of speaking, reading, writing and listening exercises.

Following the exam, there will be an interview portion that will ask you to respond to various prompts in 30 to 90 seconds. The exam will take about 45 minutes to complete and you will need either a passport, a driver's license, or a national or state ID to show the camera. The score results are generally received within a few days of exam completion.



duolingo english test



Dear Applicant

We appreciate your interest in studying at European Leadership University (ELU). In order to apply for admission, you need to send your documents to studentaffairs1@elu.edu.tr or apply through online admission portal at <https://elu.edu.tr/apply-now/> link.

Once we receive your application, the admissions committee will evaluate and review the documents; if you meet the minimum requirements, ELU will send you a Conditional Letter.

If you accept the offer of admission and want to register and make payment, you can pay the tuition fees cash in the main office or through bank account details written on the Conditional Letter or send the money through Western Union.

After receiving the initial payment by student affairs, the admissions committee will issue the Letter of Acceptance along with a payment receipt and send it to your email address; then, you will be allowed to travel to North Cyprus. Furthermore, the tuition fees and agent commission details are as below:

ELU Associate Degree Programs Tuition Fees and Scholarships:

Scholarships (%)	0%	25%	50%
Tuition Fee (Yearly)	3,000 Euros	2,250 Euros	1,500 Euros
Initial Payment	1,000 Euros	1,000 Euros	1,000 Euros

*For all international students, 50% of scholarships have been considered.

Initial payment: 1,000 Euros (First-semester registration).

Second-semester tuition fee is 500 Euros.

**All admitted undergraduate students must pay 1,000 Euros as the first tuition installment to receive the Letter of Acceptance.

ELU Undergraduate Programs Tuition Fees and Scholarships:

Scholarships (%)	0%	25%	50%
Tuition Fee (Yearly)	4,400 Euros	3,300 Euros	2,200 Euros
Initial Payment	1,200 Euros	1,200 Euros	1,200 Euros

*For all international students, 50% of scholarships have been considered. Initial payment: 1,200 Euros (First-semester registration).

For other semesters tuition fee is 1,000 Euros per semester.

**All admitted undergraduate students must pay 1,200 Euros as the first tuition installment to receive the Letter of Acceptance.

ELU Graduate Programs Tuition Fees and Scholarships:

Master Program:

	Non-Scholarship	50% Scholarships	75% Scholarships
Fee Per Course	380 Euros	190 Euros	95 Euros
Fee for Thesis	540 Euro	270 Euros	135 Euros
Fee for Seminar (First Time Free)	Free	Free	Free
Registration and Activity Fees	220 Euros	150 Euros	75 Euros
English Preparatory Course (Per Semester)	1,380 Euros	690 Euros	345 Euros
Fee for Leave of Absence (Max. 2 Semesters)	800 Euros	400 Euros	200 Euros

75% Scholarships Plan (4 Semesters):

Total Courses 10 x 95 Euros = 950 Euros

Master's Thesis (Minimum 2 Semesters Must be Taken) (One semester free) = 135 Euros
 Fee for Seminar (First Time Free) = Free

Registration and Activity Fees 4 x 150 Euros = 300 Euros

Total Tuition Fee for 4 Semesters = 1,385 Euros

50% Scholarships Plan (4 Semesters):

Total Courses 10 x 190 Euros = 1,900 Euros

Master's Thesis (Minimum 2 Semesters Must be Taken) (One semester free) = 270 Euros
 Fee for Seminar (First Time Free) = Free

Registration and Activity Fees 4 x 150 Euros = 600 Euros

Total Tuition Fee for 4 Semesters = 2,770 Euros

Non- Scholarship Plan (4 Semesters):

Total Courses 10 x 380 Euros = 3,800 Euros

Master's Thesis (Minimum 2 Semesters Must be Taken) (One semester free) = 540 Euros
 Fee for Seminar (First Time Free) = Free

Registration and Activity Fees 4 x 220 Euros = 880 Euros

Total Tuition Fee for 4 Semesters = 5,220 Euros



*For all international students, 50% of scholarships have been considered. Initial payment: 1,200 Euros (First-semester registration).

**All admitted graduate students must pay 1,200 Euros as the first tuition installment to receive the Letter of Acceptance.


Ph.D. Program:

	Non-Scholarship	25% Scholarships	50% Scholarships	75% Scholarships
Fee Per Course	1,200 Euros	900 Euros	600 Euros	300 Euros
Fee for Thesis	1,200 Euros	900 Euros	600 Euros	300 Euros
Fee for Qualifying Examination	800 Euros	600 Euros	400 Euros	200 Euros
Fee for Seminar	400 Euros	300 Euros	200 Euros	100 Euros
Registration and Activity Fees	500 Euros	350 Euros	220 Euros	150 Euros
English Preparatory Course (PerSemester)	2,760 Euros	2,070 Euros	1,380 Euros	690 Euros
Fee for Leave of Absence (Max. 2Semesters)	2,000 Euros	1,500 Euros	1,000 Euros	500 Euros

*** Deficiency Courses Fee will be Calculate Based on Master's Program Fees.**

75% Scholarships Plan (6 Semesters):

Total Courses 7 x 300 Euros = 2,100 Euros

Ph.D. Thesis (Minimum 4 Semesters Must be Taken) (Two semesters free) 2 x 300 = 600 Euros
Fee for Qualifying Examination = 200 Euros

Fee for Seminar = 100 Euros

Registration and Activity Fees 6 x 150 Euros = 900 Euros

Total Tuition Fee for 6 Semesters = 3,900 Euros

50% Scholarships Plan (6 Semesters):

Total Courses 7 x 600 Euros = 4,200 Euros

Ph.D. Thesis (Minimum 4 Semesters Must be Taken) (Two semesters free) 2 x 600 = 1,200 Euros
Fee for Qualifying Examination = 400 Euros

Fee for Seminar = 200 Euros

Registration and Activity Fees 6 x 220 Euros = 1,320 Euros

Total Tuition Fee for 6 Semesters = 7,320 Euros

25% Scholarships Plan (6 Semesters):

Total Courses 7 x 900 Euros = 6,300 Euros

Ph.D. Thesis (Minimum 4 Semesters Must be Taken) (Two semesters free) 2 x 900 = 1,800 Euros
Fee for Qualifying Examination = 600 Euros

Fee for Seminar = 300 Euros

Registration and Activity Fees 6 x 350 Euros = 2,100 Euros

Total Tuition Fee for 6 Semesters = 11,100 Euros

Non- Scholarship Plan (6 Semesters):

Total Courses 7 x 1,200 Euros = 8,400 Euros

Ph.D. Thesis (Minimum 4 Semesters Must be Taken) (Two semesters free) 2 x 1,200 = 2,400 Euros
Fee for Qualifying Examination = 800 Euros

Fee for Seminar = 400 Euros

Registration and Activity Fees 6 x 500 Euros = 3,000 Euros

Total Tuition Fee for 6 Semesters = 15,000 Euros



*For all international students, 50% or 75% of scholarships have been considered according to the admission committee's decision.

Initial payment: 1,200 Euros (First-semester registration).

**All admitted graduate students must pay 1,200 Euros as the first tuition installment to receive the Letter of Acceptance



PHYSICAL INFRASTRUCTURE AND FACILITIES

- Rectorate office, academic and administrative offices
- 12 classrooms, equipped with TV sets, online camera, and free access to internet
- 3 study rooms for the students to do the research and group work, with an area of 15 m², 25 m², and 26 m².
- The library, 100 m², includes 25 seats, 3 smart TVs 55 with E-Libraries access with 4,942,358

- books and 77,050, 028 articles which creates a comfortable space for the students to study.
- Open Auditorium, multi-purpose foyer area, equipped with computers and two large screens for the presentations
- Cafeteria with two Automatic Vending Machines
- Student Lounge, with six sofas, 5 stand lights
- Internal garden with an area of 80 m²





EUROPEAN LEADERSHIP UNIVERSITY CENTRE FOR ENTREPRENEURSHIP AND BUSINESS INNOVATION (CEBI)

The Centre for Entrepreneurship and Business Innovation exists to foster a more prosperous economy by providing resources and guidance to student entrepreneurs and small businesses on the road to success. CEBI positively impacts the economy by strengthening existing companies, creating new jobs, retaining existing jobs, and assisting companies in defining their path to success.

Our mission is to educate, train and connect students and entrepreneurs seeking to establish and grow high value, high-growth companies. We integrate knowledge in business and corresponding technologies with business acumen to build world-class companies.

We do this by creating programs which foster the development of an entrepreneurial mindset and the abilities to identify problems and opportunities, understand the problem/opportunity through potential customers craft and narrow plausible solutions to said problem/opportunity. Approach: Think, Solve & Build

Our Activities include but not limited to:

- Mentorship and Coaching for Startups
- Courses for Startups and business
- Fellowship programs
- Webinars
- Workshops
- and more.

Website: cebi.elu.edu.tr



CENTRE FOR ENTREPRENEURSHIP & BUSINESS INNOVATION



CENTER OF UNIVERSITY INDUSTRY SYNERGIES (CUIS)

ELU' s Center of University-Industry Synergies (CUIS) program was launched in 2019 to improve the quality of mutually university-industry collaborations by developing and disseminating strategies for addressing common issues between the two sectors. In an increasingly complex and multi- disciplinary research ecosystem, universities and industries can benefit from partnering. A common goal of the long-term development plan of industrial partners is efficiency gain and competitiveness enhancement.

University-industry collaboration requires careful management and can bring many benefits. These include a two-way flow of ideas: results can flow out to industry and they can also be in- bound to fuel research questions.

Our Mission

The mission of the Center of University – Industry Synergies (CUIS) is to find and enhance synergies between university and corporate partners for mutual benefit, as well as for the economic and cultural enrichment of the North

Cyprus industrial region.

The CUIS supports mutually beneficial university-industry collaborations by developing and disseminating strategies for addressing common issues between the two sectors. CUIS supports the creation and growth of a broad spectrum of relationships between industry partners and the university' s internal stakeholders including collaborations for research, technology commercialization, entrepreneurship, and student internship and career placement services.

The tasks of the CUIS departments are:

- Harmonization of research results and industrial needs,
- Provision of an efficient R&D environment,
- Incorporating university research results into industrial projects, Flexible response to industry challenges,
- Training and administering of interdisciplinary engineers, Researching and teaching solid theoretical bases,
- Quick reaction to chops and changes of industries

ELU TOURISM CLUB

European Leadership University' s Tourism Club exists for 2 reasons:

To provide a social vehicle for students interested in the Tourism industry.

· To provide a networking contact between students and professional in the Tourism industry.

The Tourism Club was established as a forum for students interested in Tourism to network and socialize with other students and professionals. Each year the club organizes “ Tourism Career Day” which brings a varied panel of industry professionals to campus to share their perspectives and insights into the Tourism industry.

Other activities of the Tourism club include: City Tours, Competitions, Movie nights, Nature walks, seminars and webinars, publishing of monthly e-Magazine and lots more.

Upcoming Events:

World Tourism Day: 27 th September 2023

Competitions:

Dance Competition

Logo Design for ELU Tourism Club / Essay / Play writing for Green Tourism in North Cyprus

Join the Tourism Club from ELU Tourism Department





ELU LIONS

SPORT CLUB



Exercise is a great way to manage stress, keep healthy, get some downtime and even socialize. ELU offers a wide range of sports programs and state-of-the-art facilities for exercise and sports, satisfying all levels of interest, commitment and fitness. We aim to provide all our students the opportunity to participate in competitive sports, while also promoting the development of leadership and team skills and the fostering of sportsmanship. ELU is an active member of the "Cyprus University Sports Federation" (KKÜSF) in Basketball, Table Tennis, and Marathon, with men's and women's teams. We participate in competitive university sports organized by the Federation.

COMPETITIVE SPORTS

We maintain a competitive sports programme, enabling students to participate in the Cyprus University Sports Federation Championships in women's and men's football, basketball, volleyball, handball, swimming, futsal, table tennis, cross country running, beach volleyball, badminton, dart, track and field, and tennis. Trials and selection of the best student athletes are carried out at the beginning of each semester

for each team. Selected players are automatically entitled to an athletic scholarship.

RECREATIONAL SPORTS

We also offer a range of fun and recreational sports activities throughout the academic year, which provide a great way to meet people with similar interests. These include table tennis, beach soccer, beach volleyball, and Foosball.

SPORTS CLUBS

Our Sports Clubs are also very popular with our students. They include aerobics and fitness, running, basketball, futsal, martial arts, hatha yoga, outdoor activities, running and many others.

KKTC PRO-LEAGUE

This Pro-league consists of top-tier level professional basketball clubs. The best teams from the KKTC professional league are eligible to join the annual competition. There is also an opportunity for interested students to have training with our professional basketball players and have this chance to play in either Pro-league or Unileague in future.



ELU SUMMER SCHOOL PROGRAM

The ELU International Summer School brings together students from several nationalities both home and abroad. The summer school not only provides an opportunity for students to learn new practical skills, it is also an opportunity for students to get ahead with their degree; students can choose from either the courses they are yet to take in coming semesters thereby shortening their number of courses which can help them graduate earlier, or they can make up for previous courses. Another opportunity the summer school gives students is its affordability, students can pay per course unlike the semester fees.



GASTRONOMY

The Gastronomy workshop is about the way different cultures cook and eat their food. It reflects the culture, heritage, traditions and sense of community of different peoples. It is a way of promoting understanding among different cultures, and of bringing people and traditions closer together. It helps the students in Tourism Management be familiar with various cuisines and traditions all over the world. Overall, a gastronomy workshop can provide tourism students with practical skills, cultural awareness, business knowledge, networking opportunities, and creativity and innovation experiences that can help them succeed in their future careers.



BAR & BARTENDER

The purpose of this workshop is to provide a service in the food and beverage industry and involves learning about the industry, having skills and knowledge, and doing assessment activities to ensure that the people who hold it are qualified to do the job they do.

The benefit of this training for Tourism students is to train them to keep an eye on current industry trends and encourage them to recommend their establishment to other potential industries in the future.



FRONT OFFICE

This qualification is designed to help people pursue a career as a Front Office Manager in the Hospitality industry. It helps to determine what knowledge, skills, and abilities are needed to do this job well and provides guidance on the type of training that may be necessary, such as greeting and welcoming guests, receiving and delivering all incoming and outgoing mail and packages, answering all calls, directing as needed, scheduling meetings, and coordinating office activities.

Training Tourism Management Students in multiple functions creates a positive work environment and skilled team members. This helps to balance the workflow and develop team spirit. Additionally, cross-training the front desk team allows for greater flexibility when needed.



LAUNDRY



The overall objective of a laundry workshop is to empower Tourism students with the knowledge and skills needed to care for clothes effectively and efficiently, while also promoting sustainability and eco-friendly practices in laundry care. Furthermore, it teaches participants how to properly wash and care for clothes, including sorting, washing, drying, and ironing techniques, and introduces different types of laundry products and tools, such as detergents, fabric softeners, stain removers, and washing machines. Overall, a laundry workshop can provide tourism students with practical skills, professional development, sustainability knowledge, and team-building opportunities to help them succeed in their future careers.

ROOM SERVICE

This workshop is responsible for greeting guests and answering questions, changing bed linen and making beds, replacing used towels and other bathroom amenities, sweeping and mopping floors, vacuuming carpets, dusting and polishing furniture, and emptying trash containers and ashtrays. Room service is a great way to make sure that the guests are happy and that food is served correctly. Acknowledging Tourism management students with room service and guest satisfaction will improve their management skills.

